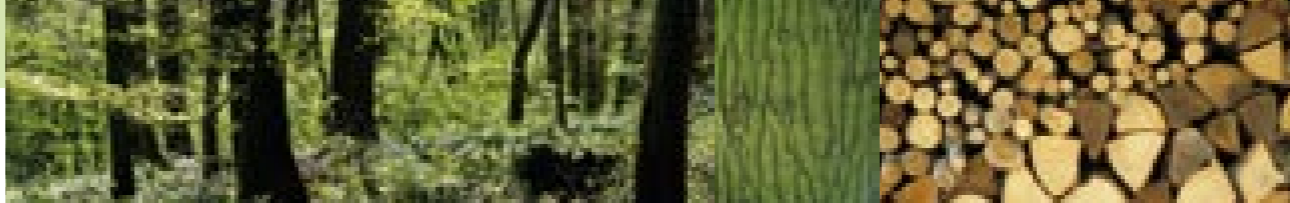


timber encyclopaedia



	Bangkirai	Massaranduba	Garapa	Oak	Cedar (WRC)
Country of origin	Indonesia, Malaysia	South Amerika	South America, Brazil	Europe	British-Columbia, Canada
Advantages	– very durable timber – suitable for installation in soil and water – very high resistance against fungus and blue stain	– very durable timber – suitable for installation in soil and water – very high resistance against fungus and blue stain	– very durable timber – good stamina – very high resistance against fungus and blue stain	– very durable timber – indigenous alternative to tropical timber – stable and solid due to finger-jointed machining	– very light timber – low risk of expansion and contraction – low risk of warping – the natural shade of cedar turns into a silvery-grey
Approx. weight per m³ at delivery	1200 kg	1100 kg to 1200 kg	900 kg to 1000 kg	650 kg	400 kg
Surface	ribbed, smooth or grooved	ribbed, grooved	ribbed, smooth or grooved	grooved	smooth or grooved
Stability/hardness	very hard	very hard	very hard	hard	relatively soft
Durability in exterior application	very good, even with direct ground contact	very good, even with direct ground contact	very good	very good	very good, even with direct ground contact
Knots	almost free from knots	almost free from knots	almost free from knots	almost free from knots	almost free from knots
Risk of splitting	fine splits, especially at the end grain	medium or occasional, especially at the end grain	medium or occasional	occasional	occasional
Risk of warping	high	medium	low	low	low
Resin content	none	none	none	none	none
Quality of machining	difficult, pre-drilling required	difficult, pre-drilling required	medium, pre-drilling required	medium, pre-drilling recommended	easy, pre-drilling recommended
Risk of expansion and contraction	high, must be considered with the construction	medium or high, must be considered with the construction	medium	low	low
Acceptance of a finish	good	medium	medium	good	very good
Distance of the sub-construction beams	generally max. 50 cm 16 mm deck board not suitable for deckings	generally max. 50 cm	generally max. 50 cm	generally max. 50 cm	
Leaking timber contents	reddish / brown ingredients during the first months	reddish ingredients during the first months	light brown ingredients during the first months	occasional in combination with metal, light brown ingredients during the first months	unnoted, only with the use of galvanized screws
Durability class*	I-II	I	I-II	II -III	II-III

*DIN EN 350-2

Details

Our company supports sustainable cultivation and strives to get objective proof of origin for our timber. To enforce this aim, we have applied the high standard of FSC to our company and certain products.

Osmo Holz und Color GmbH & Co. KG has been FSC-certified for manufacturing and trading by an independent institute since January 2005. The FSC-products in our brochure are marked with the FSC logo.



100%
aus vorbildlich bewirtschafteten Wäldern
www.fsc.org Zert.-Nr. IMO-COC-24334
© 1996 Forest Stewardship Council

All Osmo products are manufactured and tested according to high German standards.

All posts of our Premium range are made of high-quality half-sawn or quarter-sawn timber with low risk of warping.



cross section of half-sawn timber



cross section of quarter-sawn timber

	Pressure impregnated pine	European Larch	Siberian Larch	Douglas fir	Spruce	
	Northern / Central Europe	Central Europe	Eastern Europe	Central Europe	Northern / Central Europe	Country of origin
	– good price performance ratio – easy to machine – high resistance against fungus and blue stain	– good price performance ratio – easy to machine – good structural characteristics	– good price performance ratio – easy to machine – good structural characteristics	– good price performance ratio – easy to machine – good structural characteristics – low risk of splitting	– good price performance ratio – easy to machine – partially made of glued wood beams with good structural characteristics – with PEFC – certificate	Advantages
Approx. weight per m³ at delivery	550 kg	550 kg	550 kg	500 kg	370 kg to 450 kg	Approx. weight per m³ at delivery
Surface	ribbed, smooth or grooved, slightly rough at knots	smooth or grooved	ribbed or grooved	ribbed, smooth or grooved	smooth or sawn	Surface
Stability/hardness	medium	medium	medium	medium	medium	Stability/hardness
Durability in exterior application	very good	good, without direct ground	good, without direct ground	good, without direct ground	good, coloured finish recommended	Durability in exterior application
Knots	small to big knots	small to big knots	small to big knots	small to big knots star-shaped splitted	small to big knots star-shaped splitted	Knots
Risk of splitting	medium to high	high	high	medium or occasional	medium or occasional	Risk of splitting
Risk of warping	medium	high	high	medium	medium	Risk of warping
Resin content	medium	high	high	medium, pre-drill	medium	Resin content
Quality of machining	easy, cuts to be machined over, pre-drilling recommended	medium, pre-drilling recommended	medium, pre-drilling recommended	medium, pre-drilling recommended	good	Quality of machining
Risk of expansion and contraction	medium	medium	medium	medium	medium	Risk of expansion and contraction
Acceptance of a finish	good	good (recommended)	good (recommended)	good (recommended)	good (recommended)	Acceptance of a finish
Distance of the sub-construction beams	21 mm: 30 - 40 cm 28 mm: 40 - 50 cm	21 mm: 30 - 40 cm 28 mm: 40 - 50 cm	27 mm: 40 - 50 cm	21 mm: 30 - 40 cm 28 mm: 40 - 50 cm		Distance of the sub-construction beams
Leaking timber contents	occasionally impregnation salt	partially exude of resin	partially exude of resin	partially exude of resin	partially exude of resin	Leaking timber contents
Durability class	I-II (III-V unfinished)	III	III	III	III-V unfinished	Durability class

*DIN EN 350-2

When installing the timber, please keep in mind the expansion and contraction of the timber due to changing climates in summer and winter. These characteristics might lead to changing dimensions in width and thickness (up to 10%). The correct choice of place and construction is most important.

As bamboo is a natural product it may turn grey or crack due to changing climatic conditions through the year. Since it has not been treated with wood preserving finishes, fungus might occur if installed in unsuitable places.

We recommend to use our finishes as additional protection for your high-quality products. They reduce the natural greying and splitting process and increase the weather-resistance.

Timber is a naturally grown product. Therefore, natural ingredients of some types of timber might wash out and stain walls or floors (timber, plastered walls, etc.).

The correct choice of timber to match the surroundings is very important, especially for deckings!

Please follow the information and advice in our brochure and our assembly instructions (also available at www.osmo.de). Create your plans and design according to valid rules of craftsmanship. Please visit www.osmo.de for further information about the different types of timber!